

**“Smarter Routes Better Deliveries”**

**AI - Powered Dynamic Fleet  
Route Planning & Optimization  
Software**



<https://www.dynaroute.ai>

# Manage, Plan & Optimize Your Routes in 5 min

✓ **%100 Web**  
No installation process and no fees, no hardware and software required. DynaRoute is a cloud-based software and Saas

✓ **Easy**  
The interface is very simple and contains sequential elements. No unnecessary and repetitive buttons. Ability to use in your own language and no need training

✓ **Fast**  
In just 5 minutes you can define your vehicles and drivers, upload your orders, plan your routes and send them to your drivers.

✓ **Cheap**  
It is very cheap compared to its competitors. All features are included in one package and the subscription fee is only 36 USD per month. No unnecessary price increases for each additional feature

The screenshot displays the DynaRoute software interface. On the left, a sidebar contains navigation icons for Simulations, Vehicles, Orders, Zones, Optimization, and Navigation. The main area is titled 'Optimization' and features a search bar and a table with columns for Color, Name, Zone Name, and Stops. The table lists four technicians: Technician\_1, Technician\_3, Technician\_2, and Technician\_4, each with 30 stops. Below the table, there is a section for 'Unplanned visits (0 / 0)'. The central part of the interface shows a map of Las Vegas with a complex network of colored routes (red, orange, yellow, green, blue, purple) connecting various locations. A text overlay on the map reads 'AI - Powered Dynamic Routes'. At the bottom, a 'Planned visits' timeline shows the schedule for each technician from 07:00 to 13:45. The timeline is represented by horizontal bars with numbered markers indicating visit times. A futuristic robot character is positioned in the bottom right corner of the interface. The DynaRoute logo is visible in the bottom left, and the website URL <https://www.dynaroute.ai> is displayed at the bottom center.

# How it Works ?

## Route optimization process

**Vehicles**

Color	Name	Zone Name	Stops
<input checked="" type="checkbox"/>	Technician_1		30
<input checked="" type="checkbox"/>	Technician_3		30
<input checked="" type="checkbox"/>	Technician_2		30
<input checked="" type="checkbox"/>	Technician_4		30

**Orders**

**Excell**

**ERP**

**Hard Copy**

**Export Route**

**Hand Terminal**

**Smart Phone**

1

**IMPORT ORDERS**  
Customers orders data is imported into the system (addresses, visit time windows, visit times, coordinates, order quantities etc)

2

**PLAN ROUTES**  
Business rules are defined, customer visit routes are planned and visit sequences are shown on timeline and map

3

**SHARE ROUTES WITH DRIVERS**  
Planned routes are sent to the driver's mobile app then customer visits are monitored moment by moment

# Why You Should Choose Dynaroute?

Our AI optimization algorithms automatically provide you with the most time-efficient and cost-effective routes, taking into account vehicle capacities, delivery window skills, visit priority, as well as size, weight and dangerous vehicle restrictions. We've managed to help companies make their operations greener and avoid emitting tons of CO2 which is equivalent of planting over million trees. Upgrade to DynaRoute for faster optimization and advanced business critical features.



## Savings

It saves you at least 25% - 40% of time, money and labor



## Reduced distance

Better routes allow you to travel less distance



## Efficiency routes

More delivery in less time



## Fewer CO2 emissions

Doing the same work with fewer trips means less fuel and less carbon dioxide and environmental awareness.



## Stop making wasted trips

Route optimization enables increased vehicle fill-ups and more efficient use of your fleet



## Daily rescheduling

Fast Optimization algorithms allow route plans to be recalculated in seconds.



## Strategic optimization

Presents future route planning scenarios with alternatives



## Fastest computing time

With DynaRoute you can optimize your routes in seconds



## Easy user interface

Simple and straightforward interface allows you to become a user in minutes



## Cheapest

DynaRoute has the cheapest cost of use in the market



## Honeycombs routes

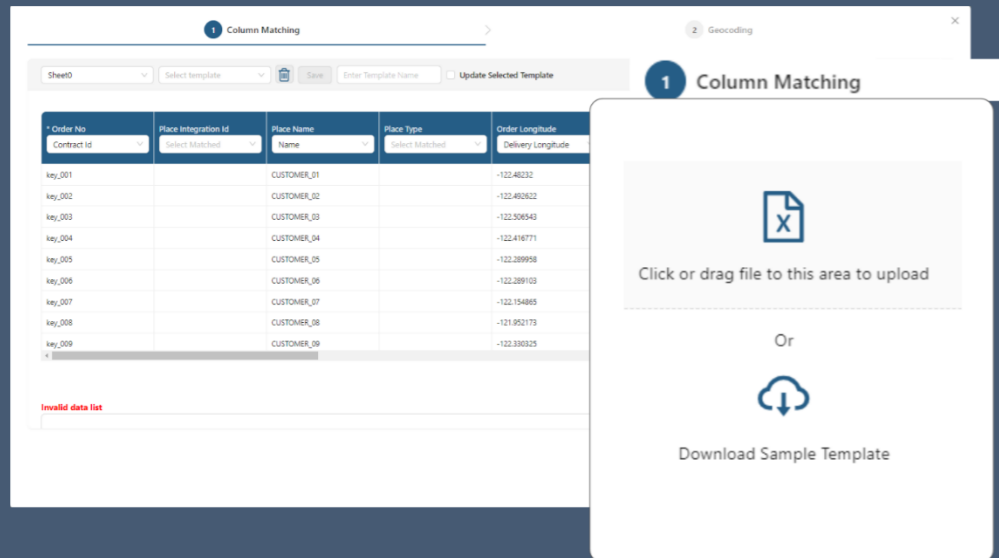
Honeycombed routes instead of intertwined routes



## Driver satisfaction

Better service with balanced and efficient routes, non-strenuous working hours

# Some Features of Dynaroute - 1



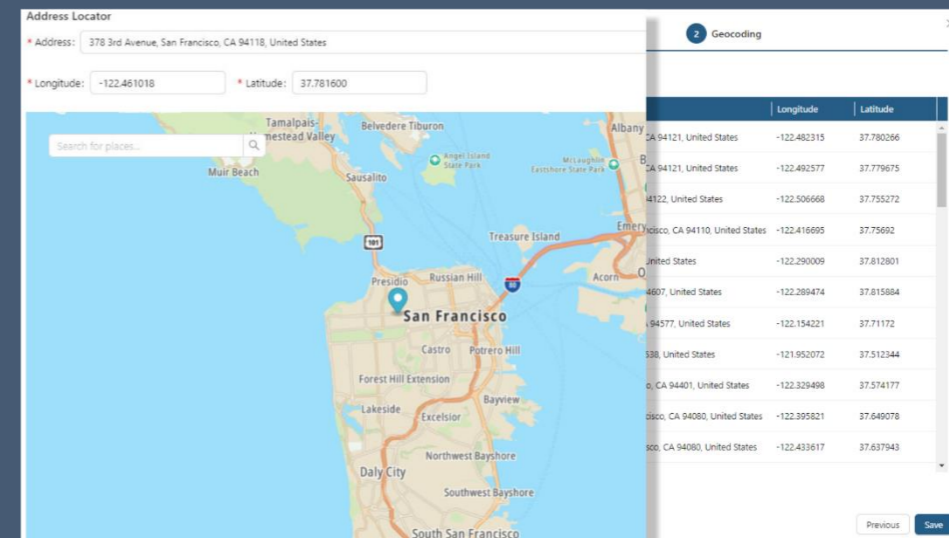
## Importing Orders From .CSV or MS EXCEL

- Bulk Import:** Utilize the data import feature to transfer all orders from your Excel sheets to DynaRoute.
- Column Alignment:** Manually match your columns with the relevant columns in DynaRoute using drop-down menus and set this as the default for future imports. Click "Continue" to review and verify column matches for accuracy and formatting. The column names in your file do not need to exactly match those in DynaRoute, but proper correspondence must be established. Columns you choose not to import can be marked as 'Not Matched'. Once all orders are correctly mapped, click "Save" to complete the import process.
- Error Notifications:** The program will alert you to any matching errors or format issues, providing examples of the correct format.
- Real-Time Tracking:** Enable the Real-Time Order Tracking feature to allow customers to track their orders live.

## Geocoding

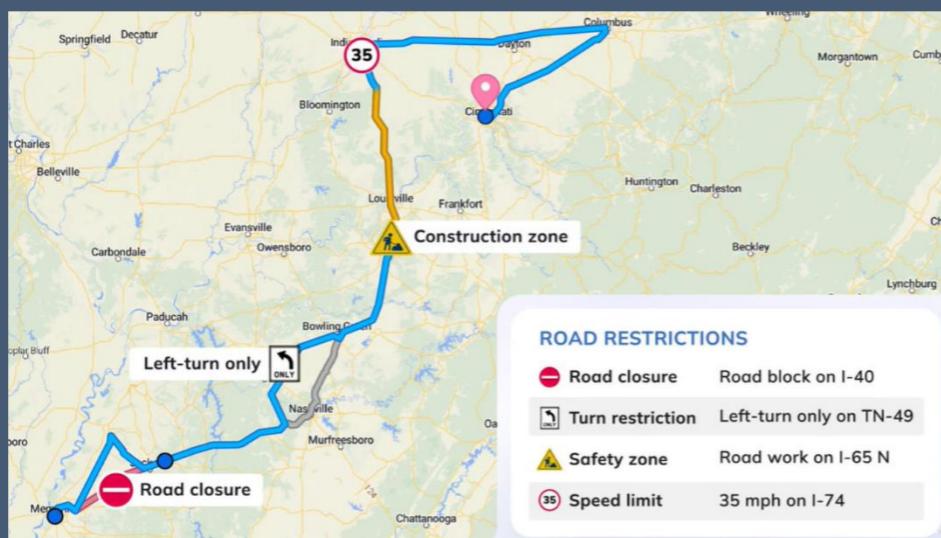
Accurate geocoding and verification of customer addresses are essential for efficient route planning.

- Data Improvement:** DynaRoute, developed with advanced AI-powered geocoding algorithms, helps prevent errors in address and coordinate data. These algorithms help create a clean data set for addresses by removing unnecessary details (such as floor numbers or building names) and focus on geocoding using the street name, location, or postal code.
- Enhanced Accuracy:** DynaRoute cross-references data with multiple coding methods and can process thousands of addresses simultaneously.
- If geocoding is not feasible, DynaRoute assists with manual data correction.

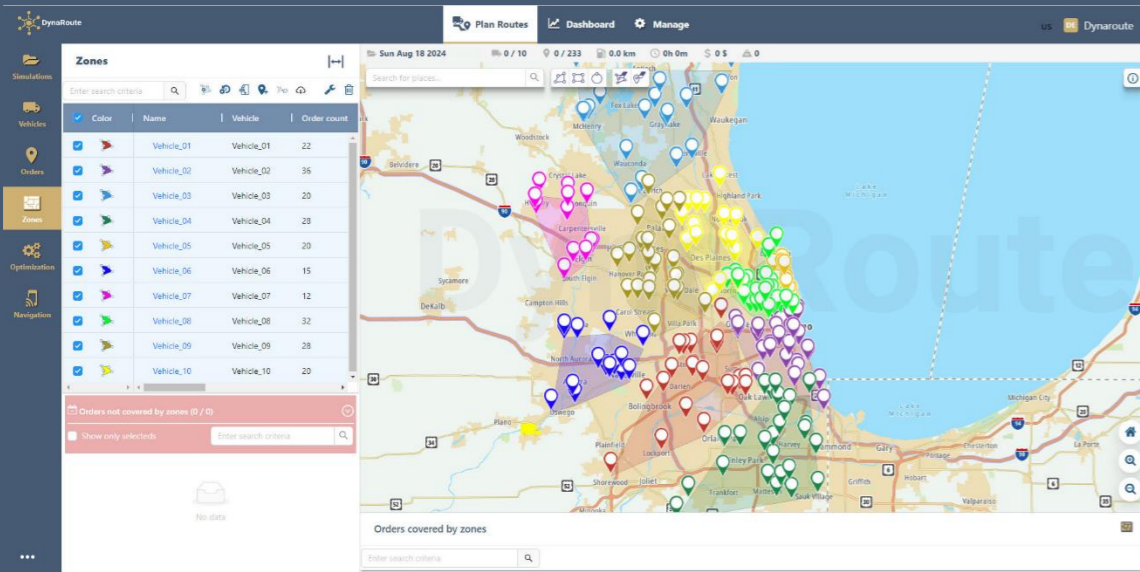


## Road Editor

The DynaRoute Route Editor Tool addresses the challenge of accurately incorporating road closures, restrictions, speed limits, and permits into routing and navigation APIs. Fleet operators can utilize this tool to update fundamental road network data to reflect upcoming or recurring restrictions, which may vary by vehicle type, permits, time of day, and other relevant factors. By marking road closures as needed, operators can optimize route planning for fleets and real-time navigation for drivers. The Route Editor Tool enables businesses to precisely represent local road networks and regulations, offering options for road closures based on specific times of day or week, recurring frequencies, and/or vehicle types (cars, trucks, motorcycles, etc.). This functionality enhances operations such as deliveries, pick-ups, and drop-offs.



# Some Features of Dynaroute - 2



## Smart Clustering & Zones (1)

Improve zone planning through intelligent job clustering by considering factors such as driving distances, traffic patterns, highways, overpasses, drivers' location preferences, and overlapping routes. DynaRoute offers various methods for zone creation:

- Manual Polygon Drawing:** Create vehicle zones by interactively drawing polygons on the map around order locations using the polygon drawing tool. When defining these zones, order quantities (e.g., kg, m<sup>3</sup>, pieces, boxes, pallets) are considered, and any overcapacity is displayed interactively within the application. Zones can be imported from Excel files or ERP systems to generate an appropriate number of address clusters.

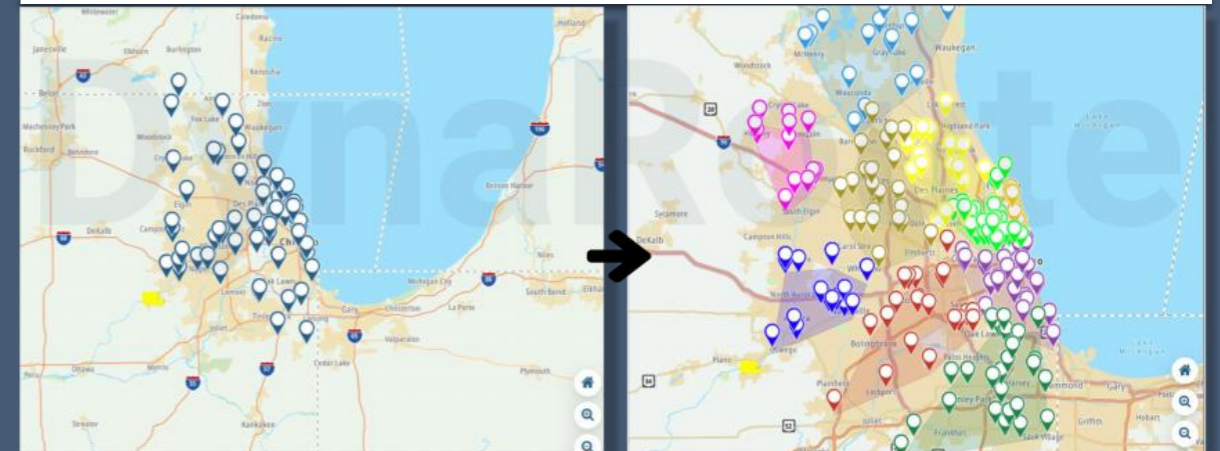
- KML Data Import:** Import vehicle zones defined as polygons in KML format into the application. Users can then assign these predefined zones to vehicles and drivers.

## Smart Clustering & Zones (2)

- Order Location-Based Zones:** Create vehicle zones based on order locations using the "assigned to vehicle" column in the location data. Vector polygons are generated for each vehicle and displayed on the map in different colors.

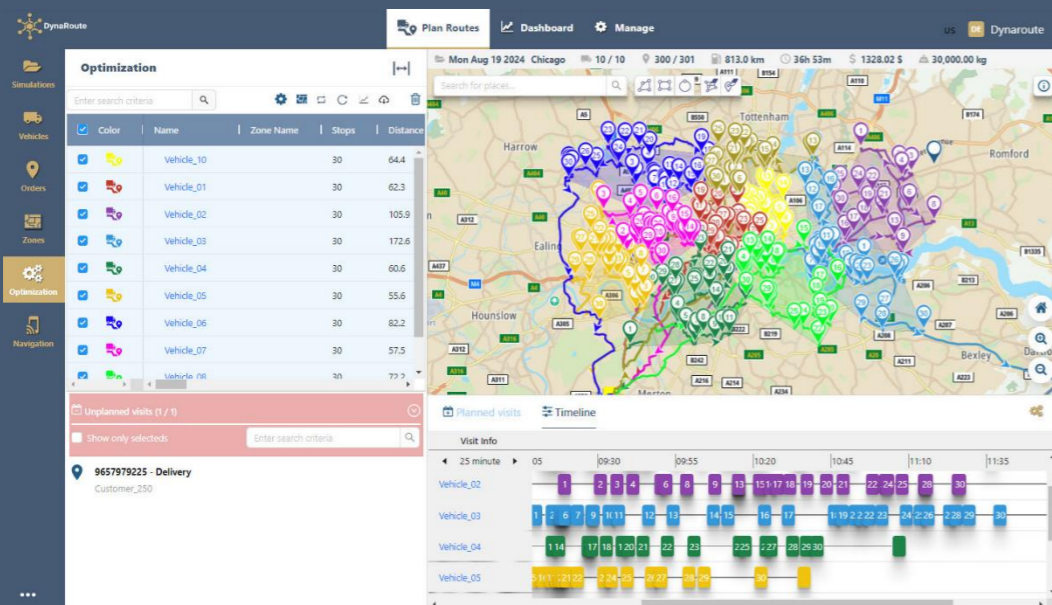
- Automatic Clustering Method:** Vehicle zones are automatically generated within a few seconds using a honeycomb clustering approach. This method accounts for customer order quantities (e.g., kg, m<sup>3</sup>, pieces, boxes, pallets) and vehicle capacities. Users can define maximum and minimum capacity values or specify the number of vehicle zones to be created. The automatic clustering algorithm divides all customer addresses from Excel files or ERP systems into the most appropriate number of address clusters, with zones represented as vector polygons in various colors and symbologies.

## Creating vehicle zones with automatic clustering method



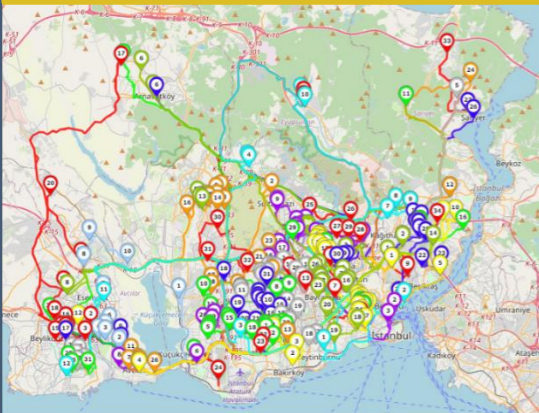
## Customized Route Optimization and Visualization

Optimize routes based on predefined vehicle zones. Customer visit sequences within these vehicle zones, created using various methods (automatic clustering, manual drawing, KML import, or assignment to vehicles), are optimized for efficiency. Vehicle routes are displayed on the map with distinct colors and symbologies, and directional arrows indicate the routes followed by the vehicles.

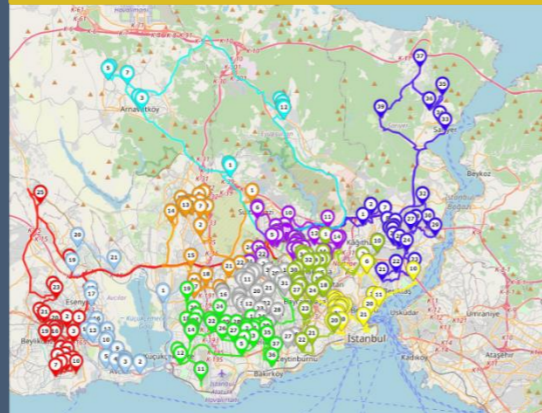


# Some Features of Dynaroute - 3

## Competitor's routes



## Dynaroute's routes



## Optimizing Routes for Efficiency and Balance

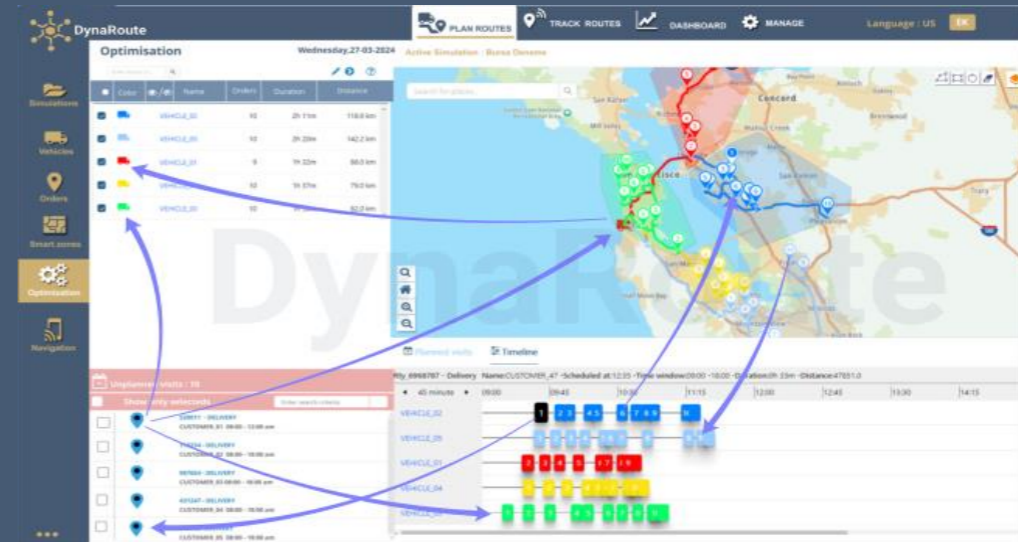
A common issue with many route optimization software solutions is the creation of inefficient, confusing, and unbalanced routes. Routes displayed in various colors and symbols can indicate overlapping or interfering services. DynaRoute addresses these problems by providing clean, well-clustered routes without intersections, which enhances driver satisfaction and reduces errors. Whether using clustered or free optimization, DynaRoute ensures consistently efficient, profitable, and operational routes.

Key features include:

- **AI-Powered Optimization:** Integrates drivers' experiences into advanced algorithms for optimal routing.
- **Customizable Adjustments:** Allows route adjustments based on working hours, number of stops, or stop capacities. For example, you can configure the system to have all vehicles return at the same time in the evening or distribute packages evenly, leading to balanced routes and equitable shifts for drivers.

## Drag&Drop

•The optimization tool features a drag-and-drop function that allows for flexible management of orders and routes. Orders on the map can be interactively selected using the selection polygon and then dragged and dropped to the most suitable location, either on the timeline or within the vehicle routes. Locations within vehicle routes, identified by different colors and symbols, can be selected using the "select by polygon" method on the map. These locations can then be removed from the route and dragged to the unplanned orders section if desired. Locations in the unplanned orders section can be marked with the cursor and then dragged and dropped to the most appropriate visit order, either on the vehicle routes on the map or within the vehicle routes list. The visit order within vehicle routes on the timeline can be adjusted. Users can change the visit order between different vehicle routes by using the drag-and-drop method or send planned order visits back to the unplanned orders window.

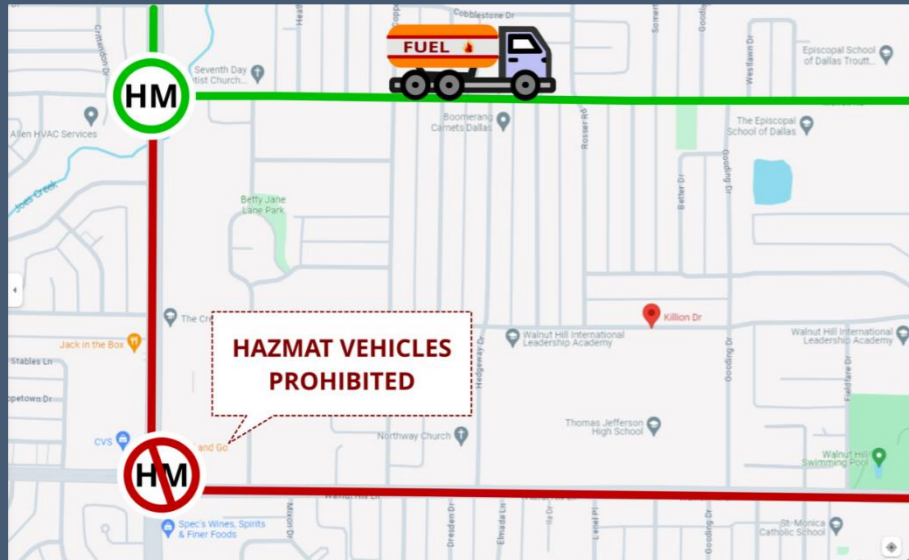


## Pickup, Delivery and Shipment

• **Integrated Operations:** DynaRoute allows for the execution of both pickup and delivery operations within a single route plan. A real-life example might involve delivering new beverage coolers to a customer, picking up a malfunctioning machine from the same location, and transporting it to a repair facility at a different site. Another example of a planned and executed operation could be collecting students from their homes in the morning, dropping them off at school, and returning them home in the afternoon. The fully automated and optimized hybrid workflow enables the integration of pickups, deliveries, and returns within the same planned route. **Flexible Order Management:** Easily create pickup and delivery options for both new and existing orders. **Simultaneous Operations:** DynaRoute efficiently schedules pickups and deliveries at the same location and can also manage delivery to a third address within the same route. **Vehicle Capacity Management:** The system ensures that drivers have sufficient space to handle all pickups and drop-offs at each stop, optimizing vehicle capacity. DynaRoute takes into account the quantity of goods and vehicle capacities to streamline pickup, delivery, and shipment operations at a single location.



# Some Features of Dynaroute - 4

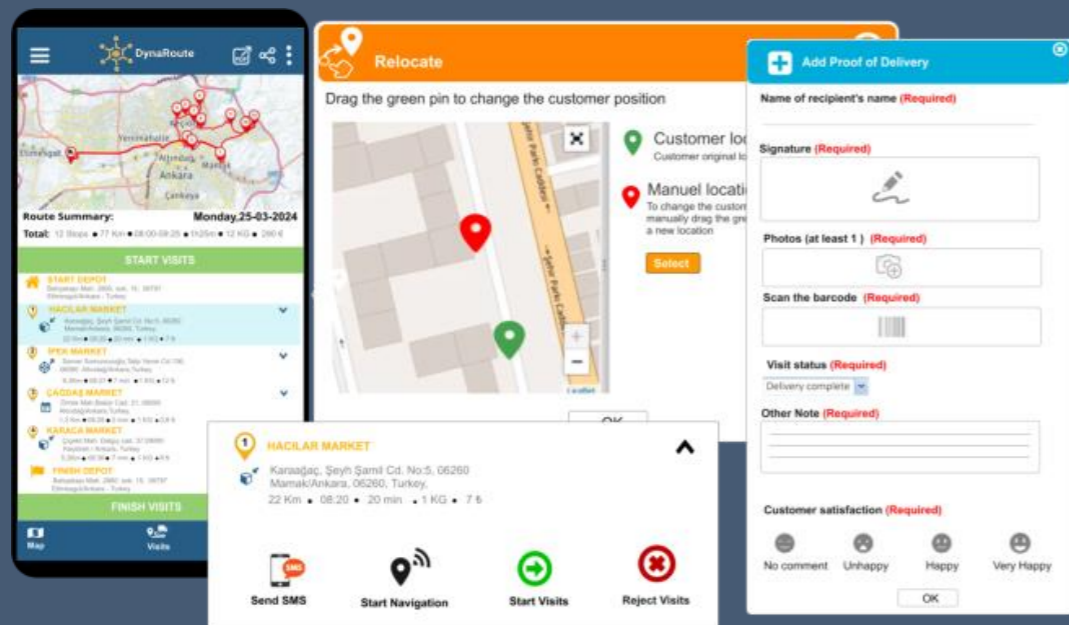
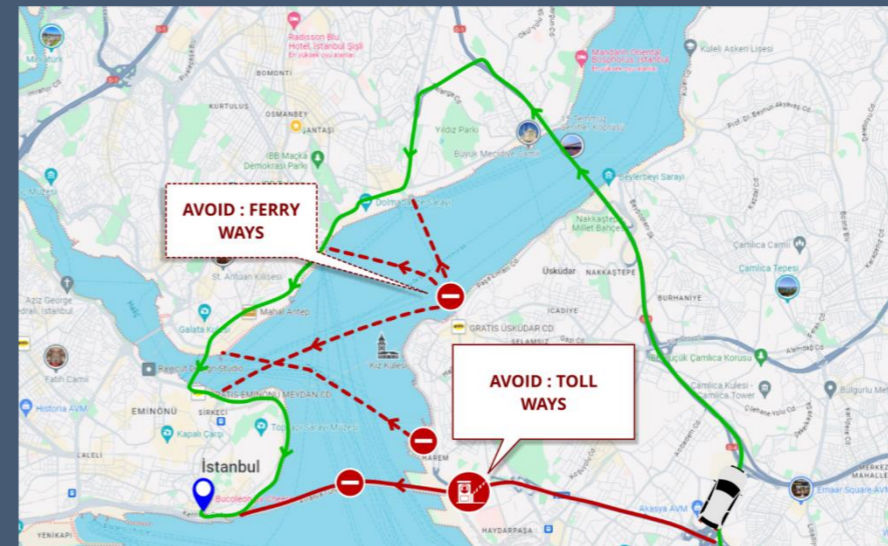


## Safe Transportation of Dangerous Goods

DynaRoute's groundbreaking dangerous goods transportation optimization feature allows you to transport hazardous materials in the safest and most efficient manner, avoiding penalties by taking into account safety issues, regulations, and road restrictions. This feature minimizes safety risks, protecting your drivers, vehicles, and cargo, and reduces the potential impact on your company's safety record. DynaRoute utilizes a constantly updated digital vector map and the program calculates the safest and most suitable route considering all restrictions, vehicle characteristics, and live traffic conditions. The dispatcher can also use the RouteCell route editor feature to ensure that transportation is conducted in the most risk-free and cost-effective manner. For example, in the event of a sudden accident, fire, or other hazards on the route of a vehicle carrying radioactive or other flammable, explosive materials, the dispatcher can use this feature to direct the driver to an alternative route that is safer and less risky.

## Customizable Avoidance Zones & Ways

DynaRoute's groundbreaking dangerous goods transportation optimization feature allows you to transport hazardous materials in the safest and most efficient manner, avoiding penalties by taking into account safety issues, regulations, and road restrictions. This feature minimizes safety risks, protecting your drivers, vehicles, and cargo, and reduces the potential impact on your company's safety record. DynaRoute utilizes a constantly updated digital vector map and the program calculates the safest and most suitable route considering all restrictions, vehicle characteristics, and live traffic conditions. The dispatcher can also use the RouteCell route editor feature to ensure that transportation is conducted in the most risk-free and cost-effective manner. For example, in the event of a sudden accident, fire, or other hazards on the route of a vehicle carrying radioactive or other flammable, explosive materials, the dispatcher can use this feature to direct the driver to an alternative route that is safer and less risky.

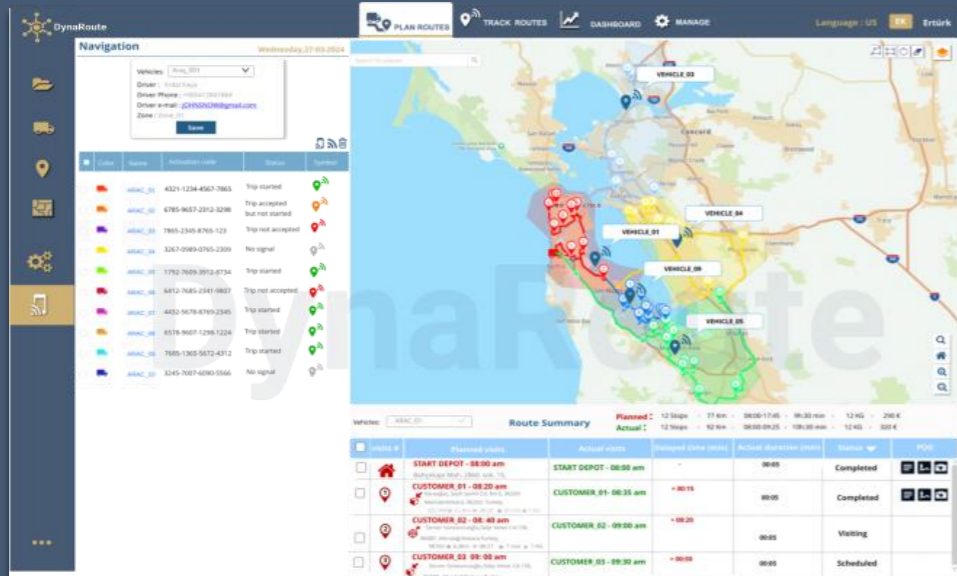


## DynaRoute Mobile App for Drivers

DynaRoute Mobile is an application designed for field personnel to enhance the effectiveness of customer visits. It integrates seamlessly with DynaRoute's web-based vehicle routing optimization software. Available for download on both Android and iOS devices, the app enables drivers to view customer visit sequences and timings and utilize its navigation feature to reach customers efficiently. Prior to each visit, the customer receives information on the exact delivery time via their mobile phone. The application includes a Proof of Delivery (POD) feature, allowing drivers to enter delivery times, obtain customer signatures, take photos of delivered goods, collect customer feedback, use the barcode scanner, and document any reasons for non-delivery. Additionally, DynaRoute Mobile offers a Live Tracking feature, continuously updating arrival times in real-time. This functionality provides route planners and customer service teams with detailed, up-to-date insights into road conditions and allows for prompt adjustments if needed. Real-time visit data from DynaRoute Mobile enhances visit efficiency and customer satisfaction by constantly updating estimated arrival times and tracking driver locations, as well as customer arrival and departure times on the digital base map.



# Some Features of Dynaroute - 5



## Field Performance Monitoring

Utilize DynaRoute's live tracking feature to connect with GPS receivers and mobile devices, enabling real-time control and monitoring of your routes. When planning a route with DynaRoute, you can estimate arrival times for each service, compare to real arrival times by using different colors and symbols, and access detailed calculations such as distances covered, fuel consumption, costs, and journey durations. This feature allows adjustments for any delays and ensures that predetermined time windows for upcoming visits remain valid. The system also facilitates prompt re-routing if necessary. The feature provides constantly updated arrival times and live ETAs, offering route planners and customer service teams detailed, real-time insights into road conditions, enabling rapid responses to any issues. Significant deviations are reported to managers at regular intervals.

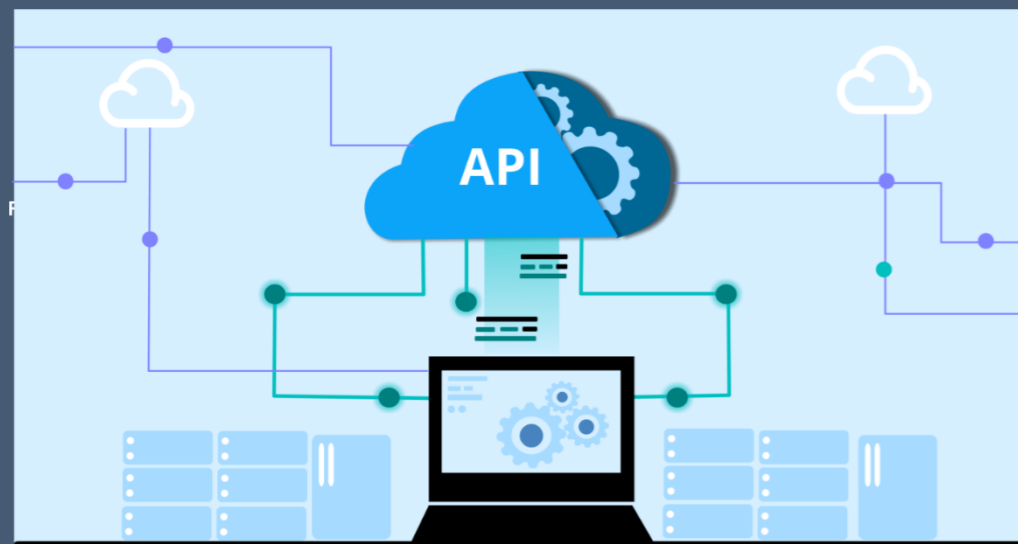
## Dashboards & Reports

- **Identify Cost-Saving Opportunities:** Analyze data on distance traveled and time worked using color bar graphs, pie charts, and line charts. Assess vehicle or driver performance on a daily, weekly, monthly, or yearly basis. Easily determine and compare metrics such as distance traveled, fuel consumption, operating times, vehicle occupancy rates, and costs for different vehicles.
- **Measure Order Performance:** Evaluate both planned and unplanned orders. Display unfulfilled orders, returns, and ratios of planned to unplanned orders on graphs for any time interval. Compare distances planned by the system with actual distances traveled by the driver, with notifications for significant percentage differences.
- **Generate Performance Reports:** Send regular summary performance reports to administrator emails. Reports include details on distance traveled by each vehicle, arrival times, undelivered orders, cargo and costs per kilometer, and vehicle occupancy rates on routes.



## Web Services API & INTEGRATION

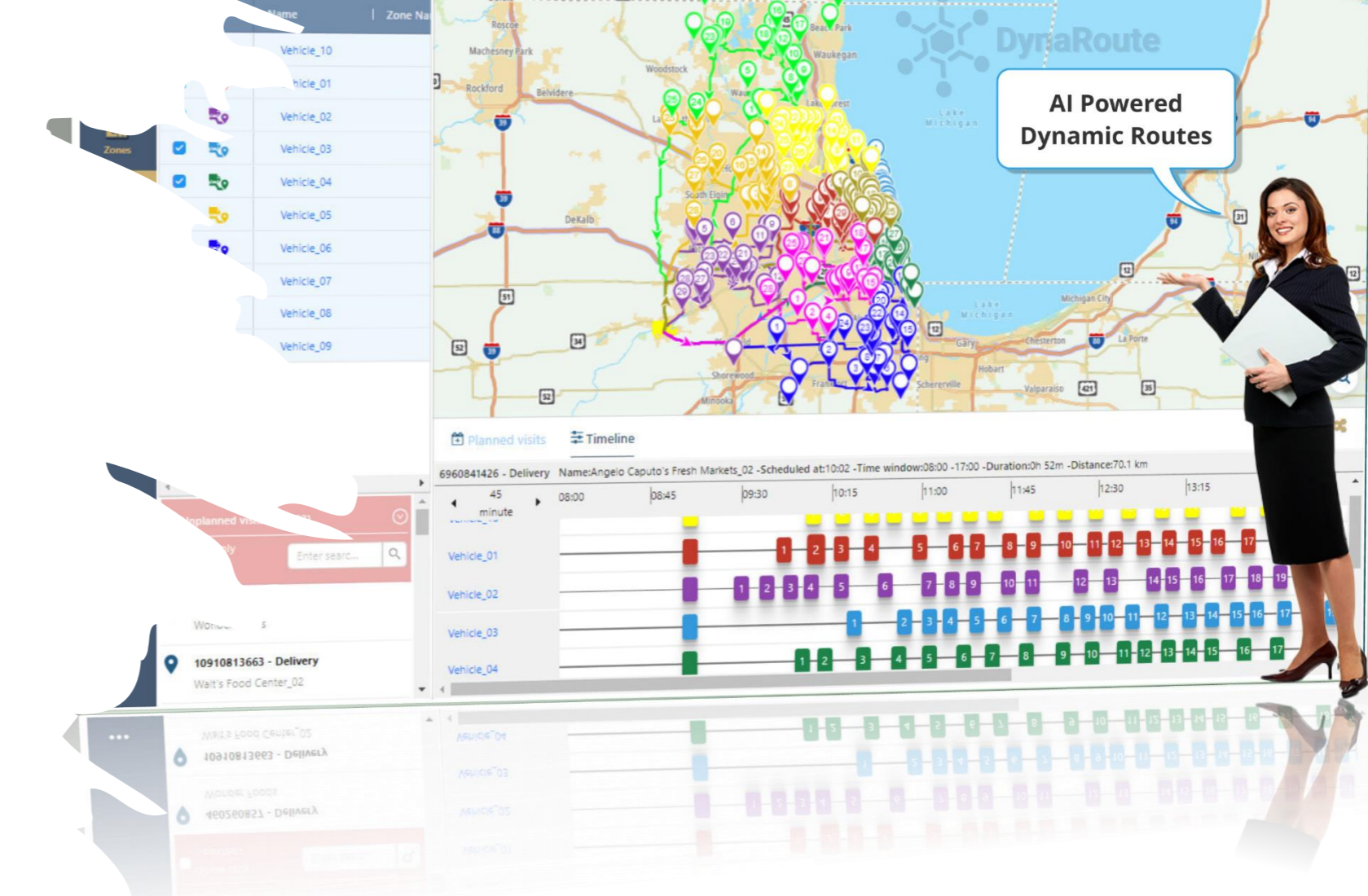
Businesses can integrate with enterprise resource planning (ERP) platforms, order management systems (OMS), transportation management systems (TMS), or other third-party software using DynaRoute's Web Service Application Programming Interface (API). Some of the platforms that DynaRoute integrates with include Microsoft Dynamics, SAP, Salesforce, Encompass TRchnologiRs, Oracle Fusion, Oracle NetSuite, Zoho, Zapier, Shopify, and Mark. The DynaRoute API is REST-based and uses the JSON (JavaScript Object Notation) format.



# Which businesses types can use Dynaroute ?

DynaRoute can be used by any last mile delivery and on demand services, food and grocery delivery, field maintenance service, merchandiser sales, employe transportation, emergency response services, health and medical services , logistics, waste management, field marketing, and any other business that requires route planning and last-mile optimization. Here are just a few business types that can use DynaRoute to save time and labor and make more money without adding more vehicles or drivers:

- Merchandisers, Sales and Customer Visits
- Technicians (natural gas, cable tv etc.)
- Courier Services
- Vending machine producers
- Distribution and Retail
- Landscaping
- Food Delivery
- Cleaning Services
- Nursing, Medical, Homecare, Pharmaceutical
- Florists
- Police departments
- Pest Control
- Electricians
- Farming and Agriculture
- Fleet Maintenance and Repair
- Home Health
- HVAC – Heating and AC
- Non-Profit Organizations
- Plumbing
- Snow clearing
- Telecommunications
- Waste Collection
- And More!



# Pricing & Plan

## Pricing & Plan

Our pricing is very clear and simple. Subscribers pay monthly or annually for the number of vehicles they have planned in the month. If paid annually in advance %10 discount is given from the total price.

### Monthly

**\$ 40** / per vehicle per month

Billed monthly

- ✓ Simulations-Route history
- ✓ Upto 4000 orders at once
- ✓ Clustering & Zoning (Automatic or manually)
- ✓ Dynamic Route Optimization (Plan as often as you like)
- ✓ Pickup,Delivery and Shipments
- ✓ Commercial Routes
- ✓ Timeline (drag & drop featues)
- ✓ Export routes (Excel,Garmin etc.)
- ✓ Mobil app for drivers
- ✓ Proof of delivery (POD)
- ✓ Live tracking
- ✓ Live ETA and Breadcrumbs
- ✓ Realtime order tracking
- ✓ Analytics (Dashboards / Reports)
- ✓ Web service API
- ✓ Upgrades
- ✓ Support

### Annually

SAVE 10%

**\$ 36** / per vehicle per month

Billed annually

- ✓ Simulations – Route history
- ✓ Upto 4000 orders at once
- ✓ Clustering & Zoning (Automatic or manually)
- ✓ Dynamic Route Optimization (Plan as often as you like)
- ✓ Pickup, Delivery and Shipments
- ✓ Commercial routes
- ✓ Timeline (drag & drop features)
- ✓ Export routes (Exccel,Garmin etc.)
- ✓ Mobil app for drivers
- ✓ Proof of delivery (POD)
- ✓ Live tracking
- ✓ Live ETA and Breadcrumbs
- ✓ Realtime order tracking
- ✓ Analytics (Dashboards / Reports)
- ✓ Web service API
- ✓ Upgrades
- ✓ Support

**THANK YOU VERY MUCH**